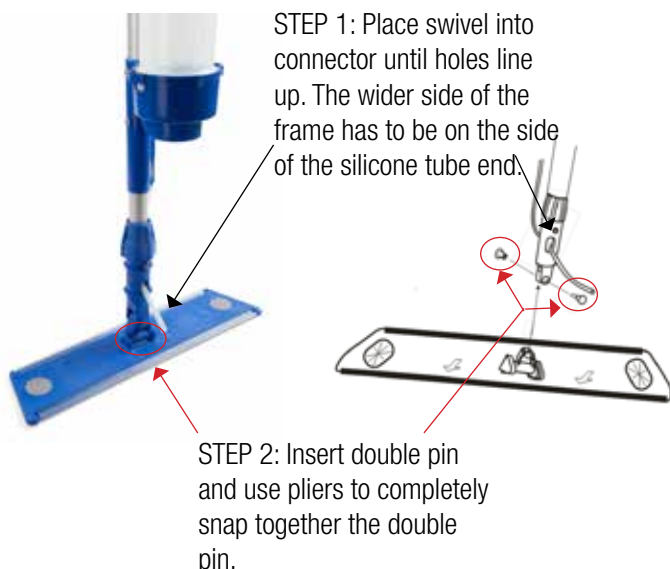




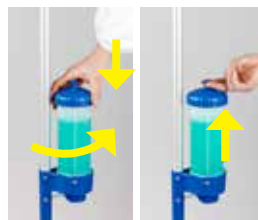
TOTAL MOP

ASSEMBLY, USE & MAINTENANCE

ASSEMBLY



CONTAINER PREP



QUICK CHANGE MODEL:

1. Unscrew cap, fill container with cleaning solution, replace cap and screw back on to secure.
2. Line up tabs on bottom of container with blue inserts on base and push down.
3. Twist counter-clockwise to secure.
4. Pull up top vent before using to assure flow of solution.



ON BOARD MODEL:

1. Unscrew cap and pull cap up.
2. Fill On Board container with cleaning solution by pouring through cap filter liner. No need to remove the filter.
3. Return cap to top of container and secure it.

USAGE / DISPENSING

SIDE PRESS



Short Burst of Dispensing:
Press Trigger-Grip on handle.



Continuous Flow/ Open Position:
Press trigger-grip on handle and press red locking button down.



Release continuous flow/open position by pressing trigger grip again.

TOP BUTTON



Short Burst of Dispensing:
Press down on the knob at the end of the handle.



Continuous Flow/ Open Position:
Press knob down and rotate clock-wise to lock in place.



Release continuous flow/open position by turning top knob counter clock-wise.

MAINTENANCE (END OF SHIFT)

QUICK CHANGE MODEL:



1. Remove Quick Change cleaning solution container.
2. Empty container by returning unused cleaning solution to original container or dispose of properly if unable to reuse. Refer to manufacturer to determine if cleaning solution can be kept in the Total Mop container until the next shift.
3. Fill Quick Change bottle with water.
4. Flush water through the Total Mop unit, leaving the dispensing knob or side grip in open / dispensing position.

ON BOARD MODEL:



1. Drain container by returning unused cleaning solution to storage container or dispose of properly (if unable to reuse by positioning the dispensing knob or side grip to open / dispensing position).
2. Fill On Board container with water.
3. Flush water through the Total Mop unit, leaving the dispensing knob or side grip in open position.

TROUBLESHOOTING / NO FLOW

QUICK CHANGE MODEL: REFER TO USAGE DIRECTIONS TO MAKE SURE THE TOP VENT IS PULLED UP.

TUBE PINCH:



1. Lock the dispensing knob or side grip in open/dispensing position.
2. Slightly pull the silicone tube until the pinch point is out.
3. Unpinch the tube by squeezing the flat edges of the pinch to open up the tube.
4. Return tube to its original position and unlock the dispensing knob or side grip.



FILMOP® USA LLC. | 13410 Highway 105 West | Conroe, Texas 77304
Toll-Free: 888 741 0707 | e-mail: info@filmopusa.com
www.filmopusa.com